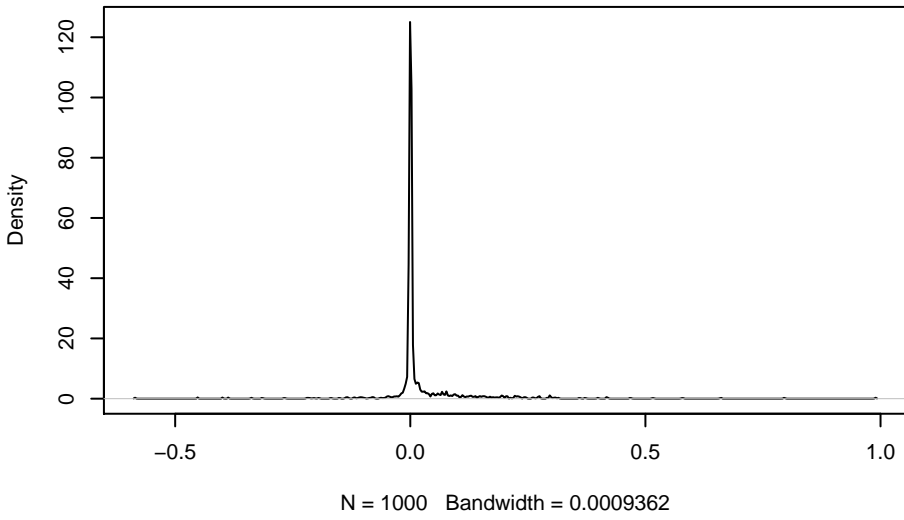
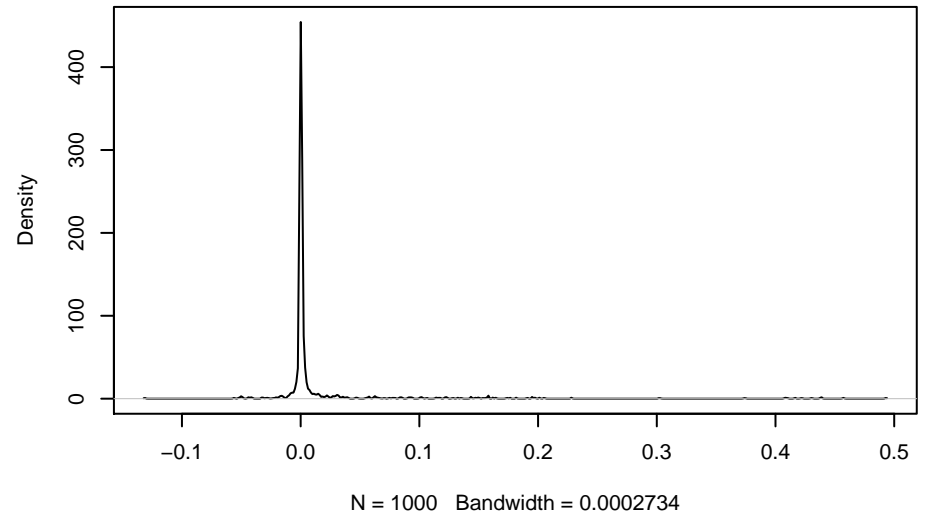


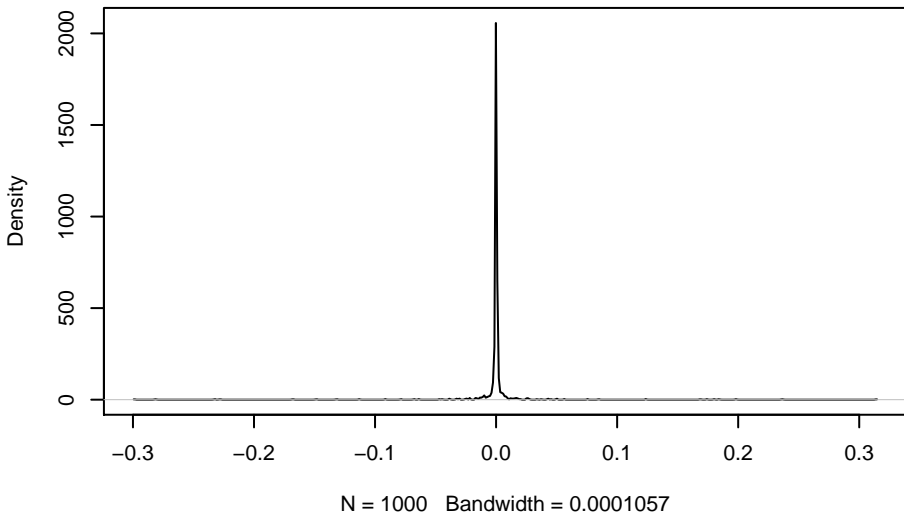
**for SD= 1 overall fit, standartized back to a SD=1**



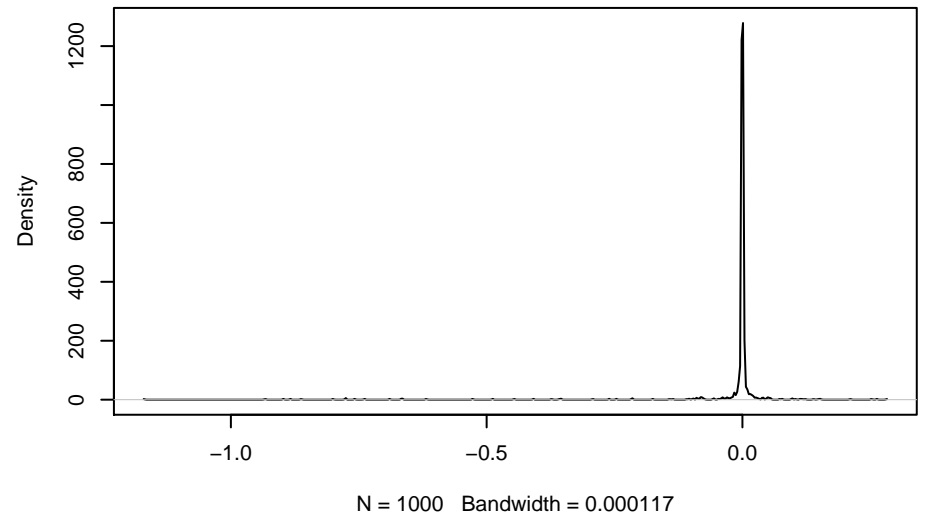
**for SD= 0.5 overall fit, standartized back to a SD=1**



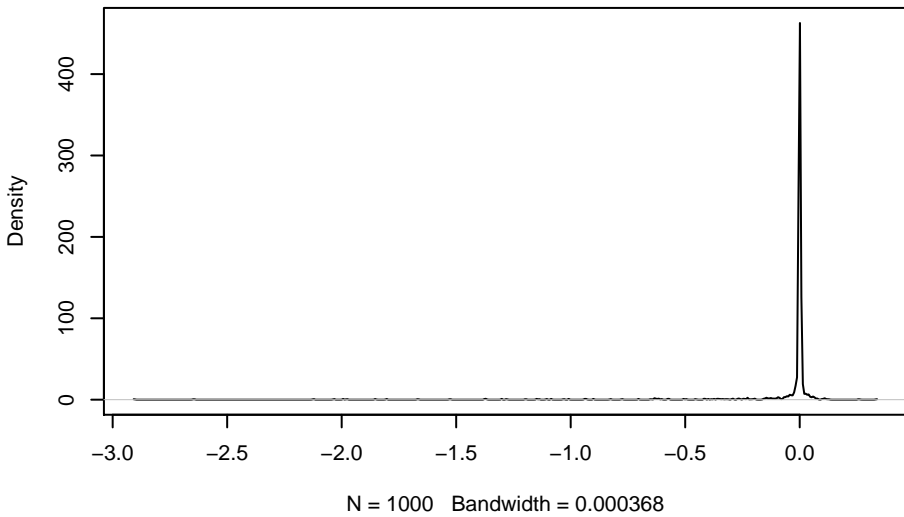
**for SD= 0.2 overall fit, standartized back to a SD=1**



**for SD= 0.1 overall fit, standartized back to a SD=1**



**for SD= 0.05 overall fit, standartized back to a SD=1**



**for SD= 0.01 overall fit, standartized back to a SD=1**

