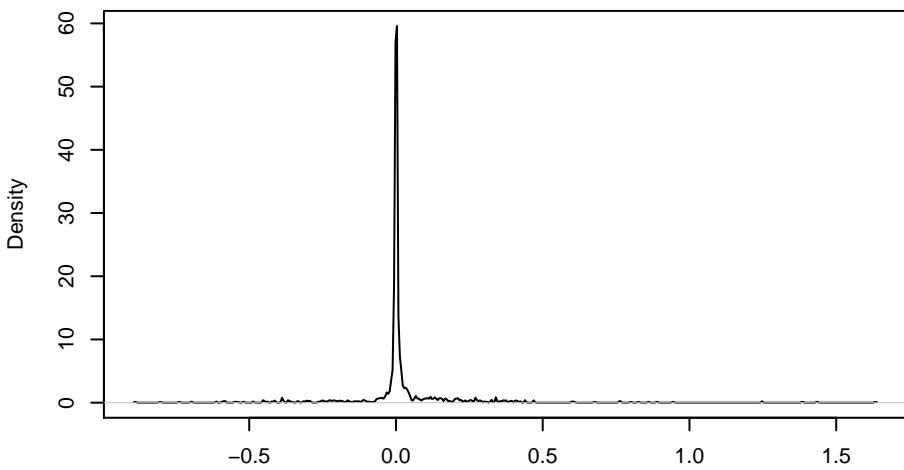
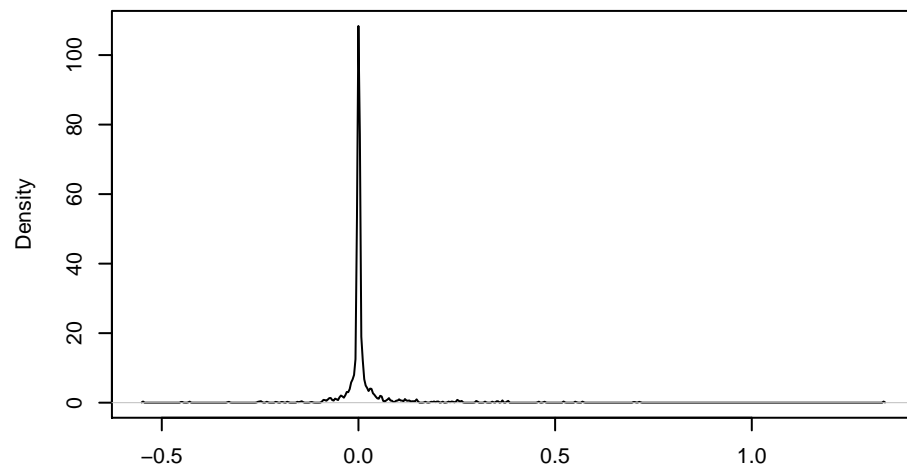


for SD= 1 overall fit, standartized back to a SD=1



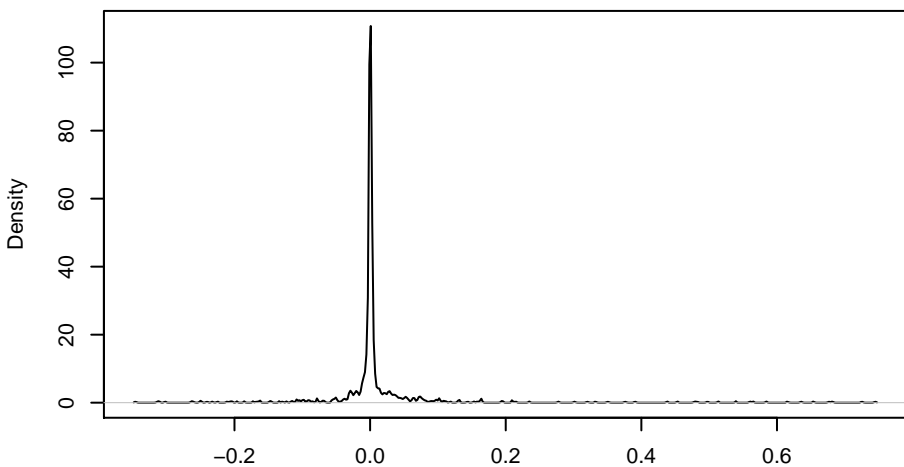
N = 1000 Bandwidth = 0.001687

for SD= 0.5 overall fit, standartized back to a SD=1



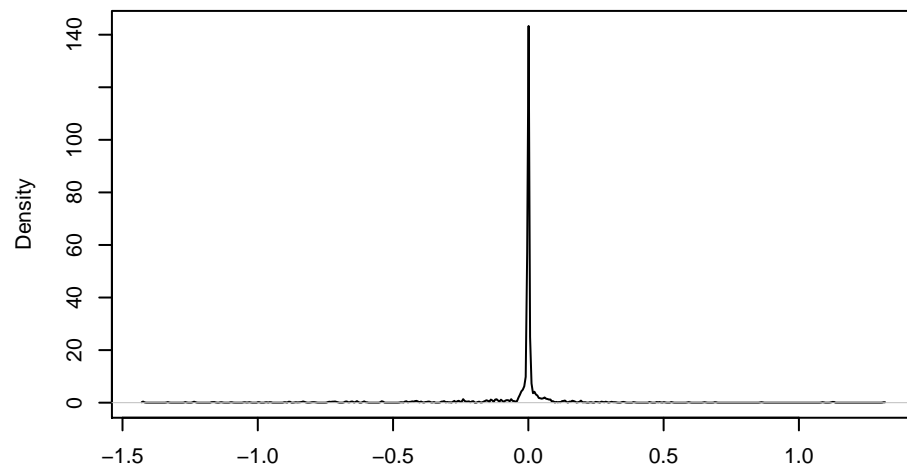
N = 1000 Bandwidth = 0.0009873

for SD= 0.2 overall fit, standartized back to a SD=1



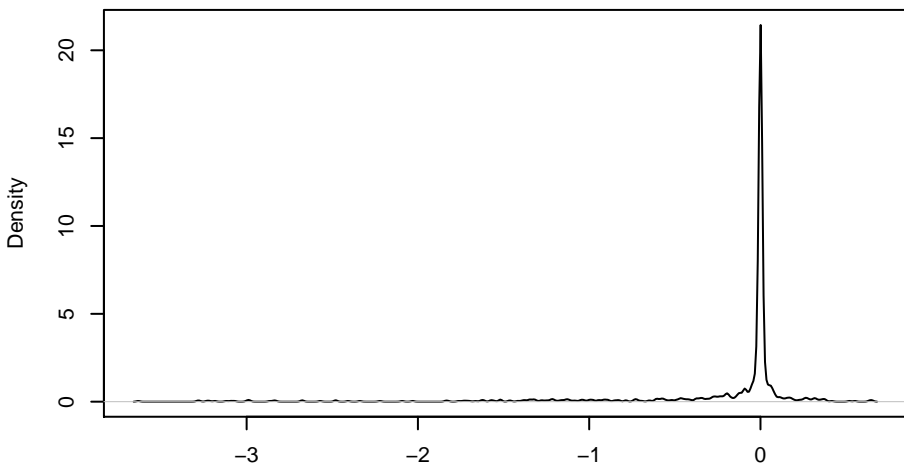
N = 1000 Bandwidth = 0.0008379

for SD= 0.1 overall fit, standartized back to a SD=1



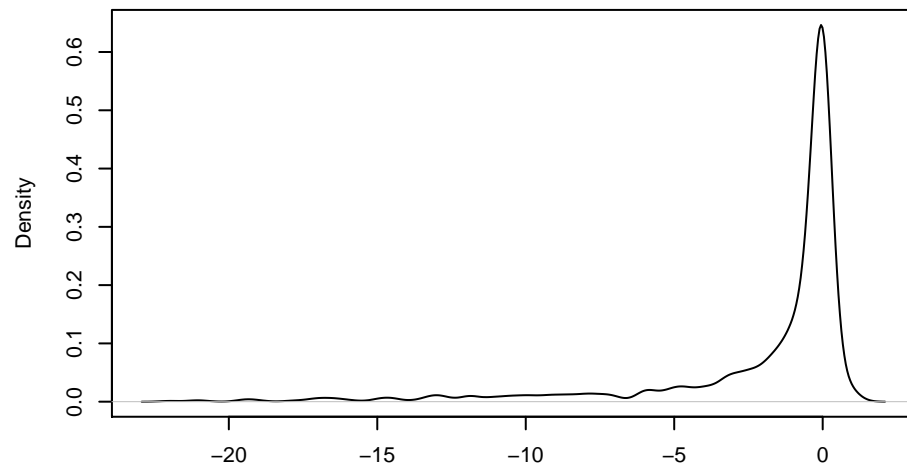
N = 1000 Bandwidth = 0.001108

for SD= 0.05 overall fit, standartized back to a SD=1



N = 1000 Bandwidth = 0.008928

for SD= 0.01 overall fit, standartized back to a SD=1



N = 1000 Bandwidth = 0.3144