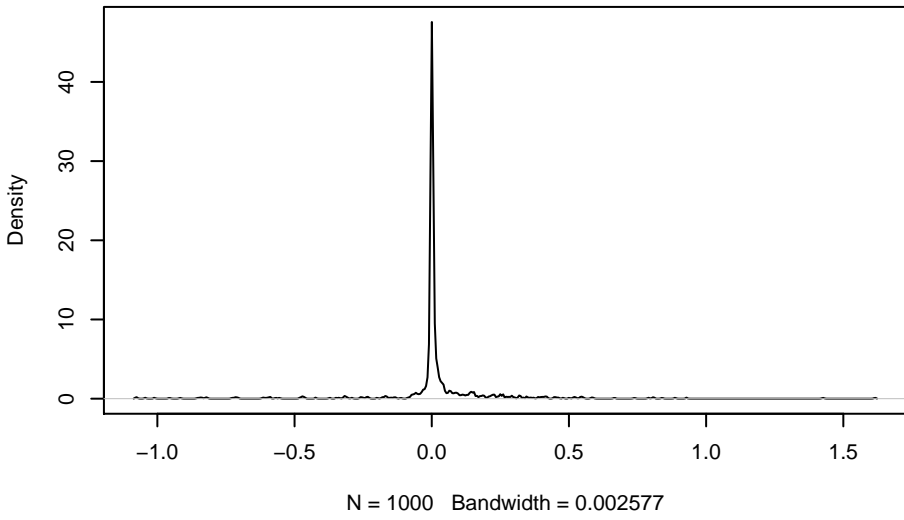
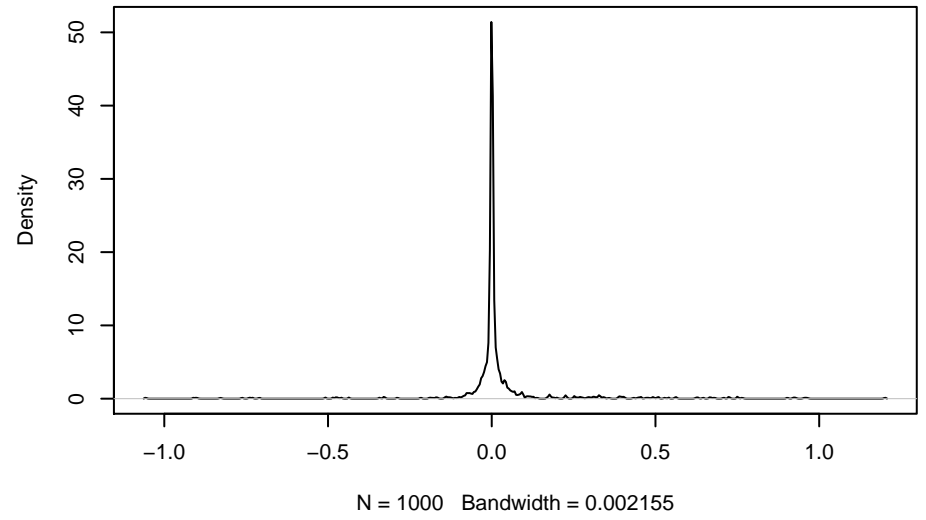


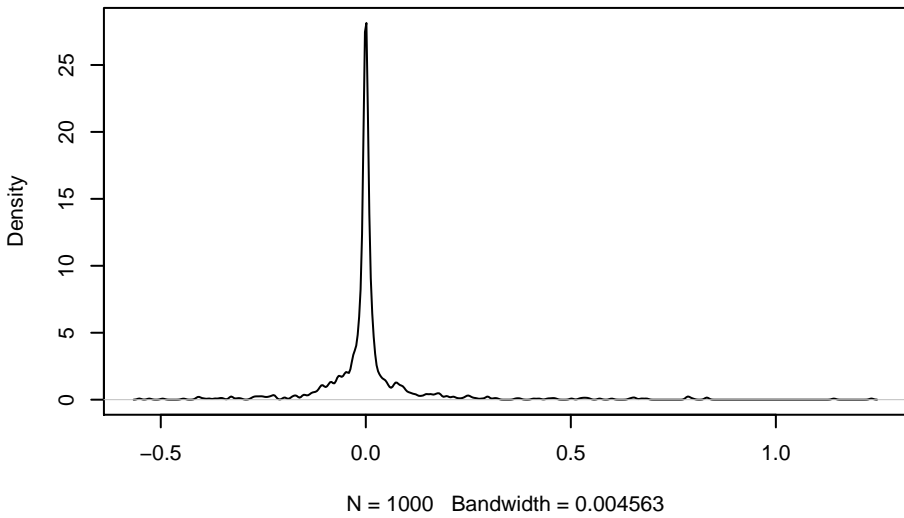
for SD= 1 overall fit, standartzed back to a SD=1



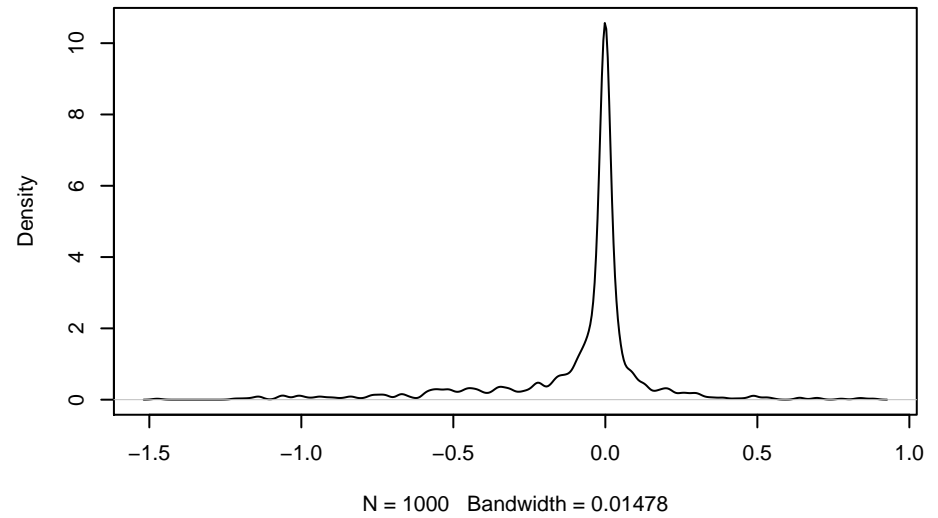
for SD= 0.5 overall fit, standartzed back to a SD=1



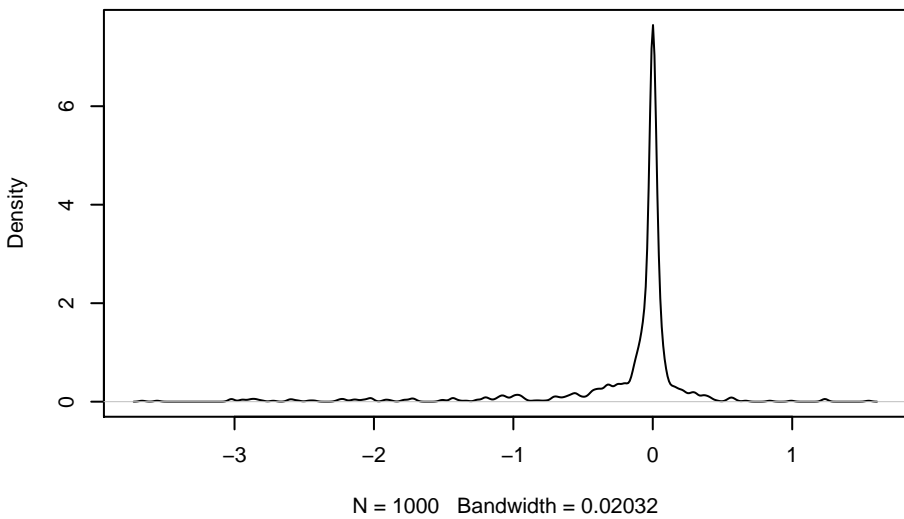
for SD= 0.2 overall fit, standartzed back to a SD=1



for SD= 0.1 overall fit, standartzed back to a SD=1



for SD= 0.05 overall fit, standartzed back to a SD=1



for SD= 0.01 overall fit, standartzed back to a SD=1

