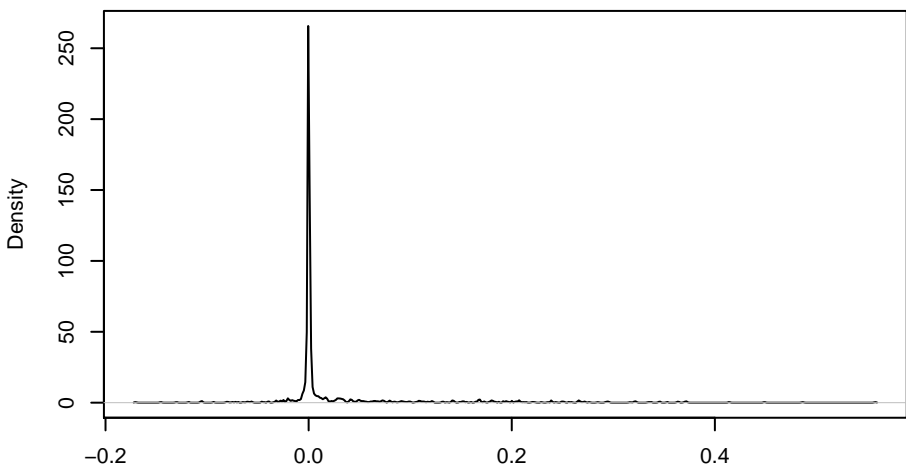
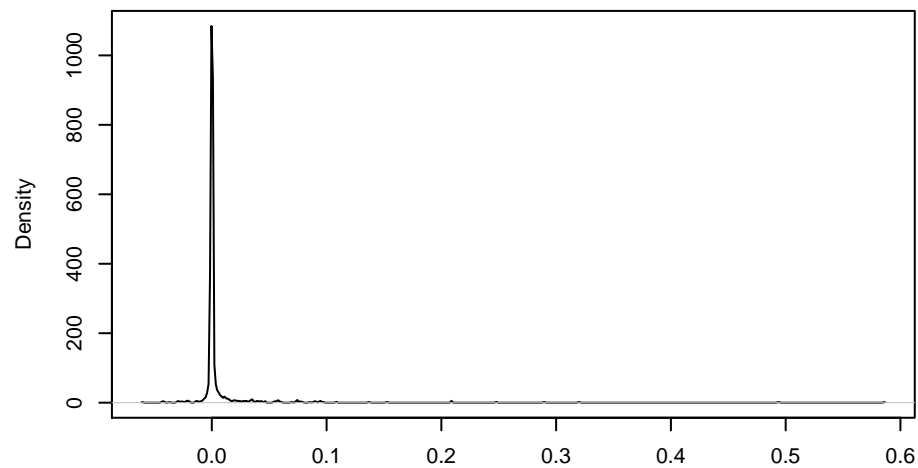


for SD= 1 overall fit, standartzed back to a SD=1



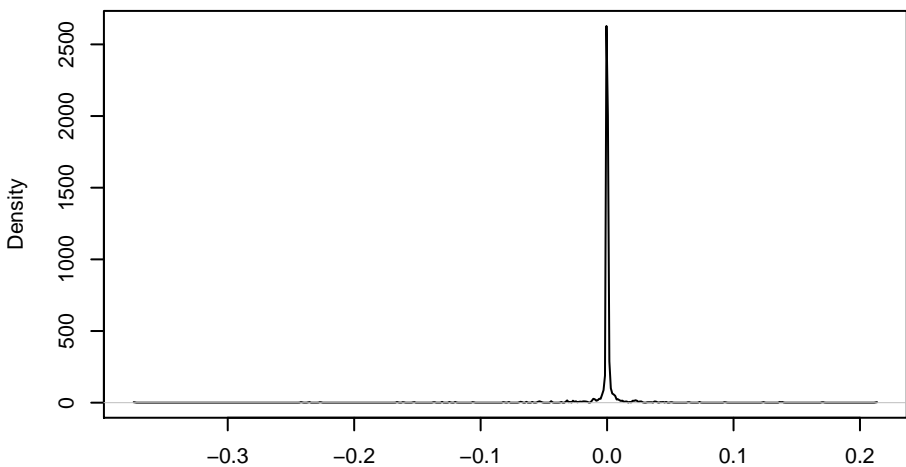
N = 1000 Bandwidth = 0.0005658

for SD= 0.5 overall fit, standartzed back to a SD=1



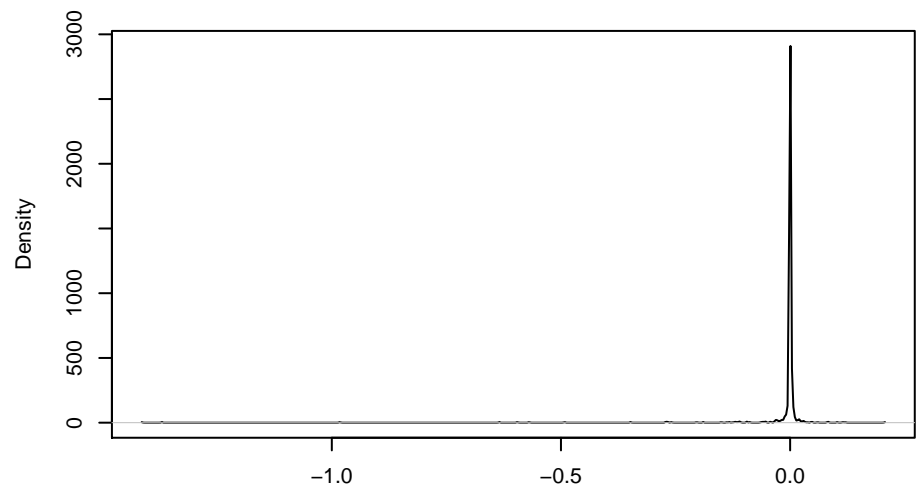
N = 1000 Bandwidth = 0.0001281

for SD= 0.2 overall fit, standartzed back to a SD=1



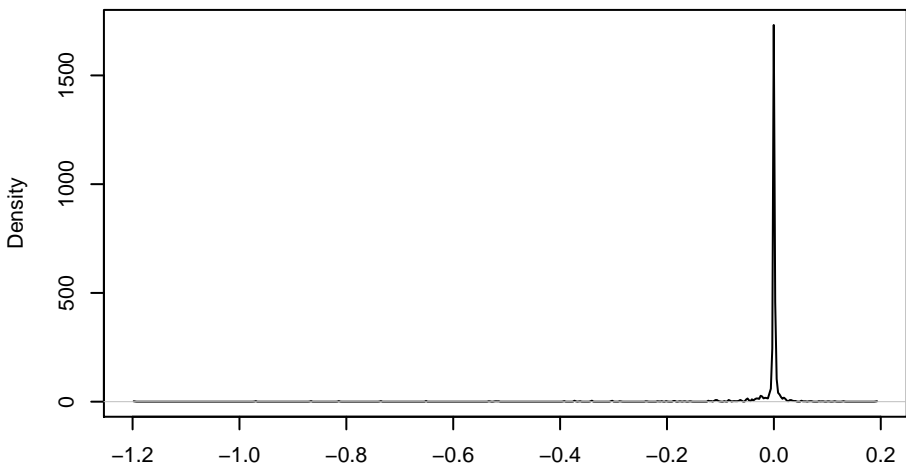
N = 1000 Bandwidth = 6.393e-05

for SD= 0.1 overall fit, standartzed back to a SD=1



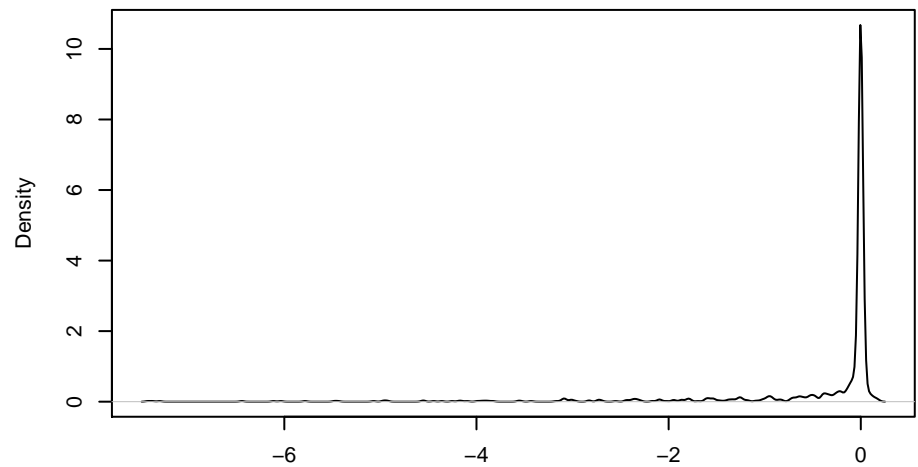
N = 1000 Bandwidth = 7.127e-05

for SD= 0.05 overall fit, standartzed back to a SD=1



N = 1000 Bandwidth = 0.0001239

for SD= 0.01 overall fit, standartzed back to a SD=1



N = 1000 Bandwidth = 0.0209