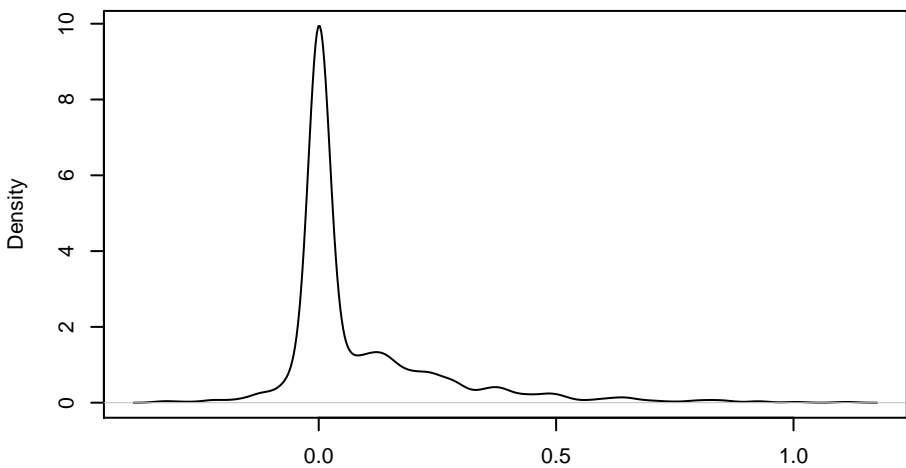
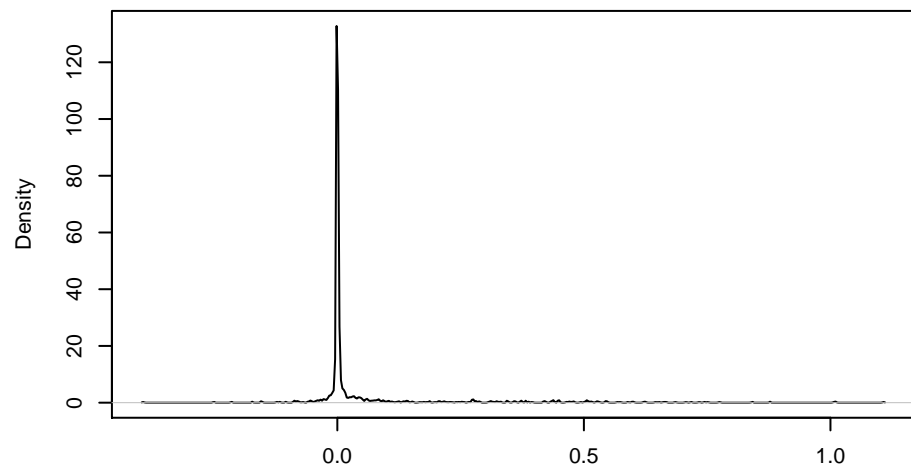


for SD= 1 overall fit, standartzed back to a SD=1



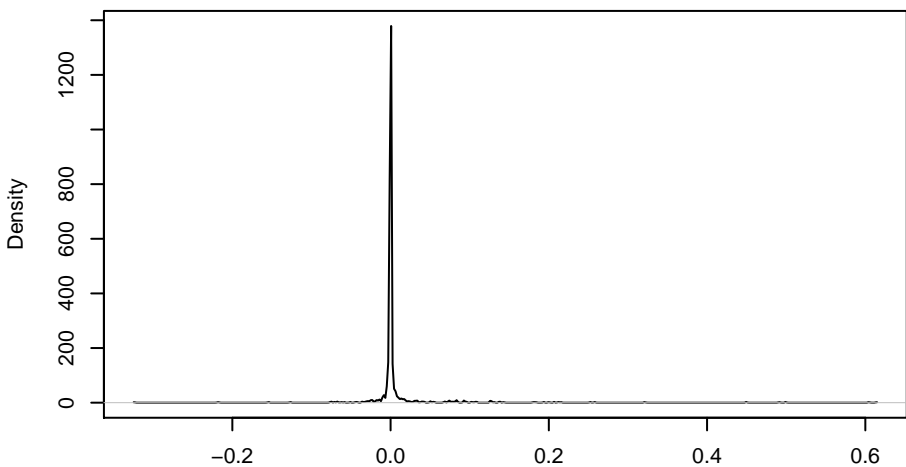
N = 1000 Bandwidth = 0.02168

for SD= 0.5 overall fit, standartzed back to a SD=1



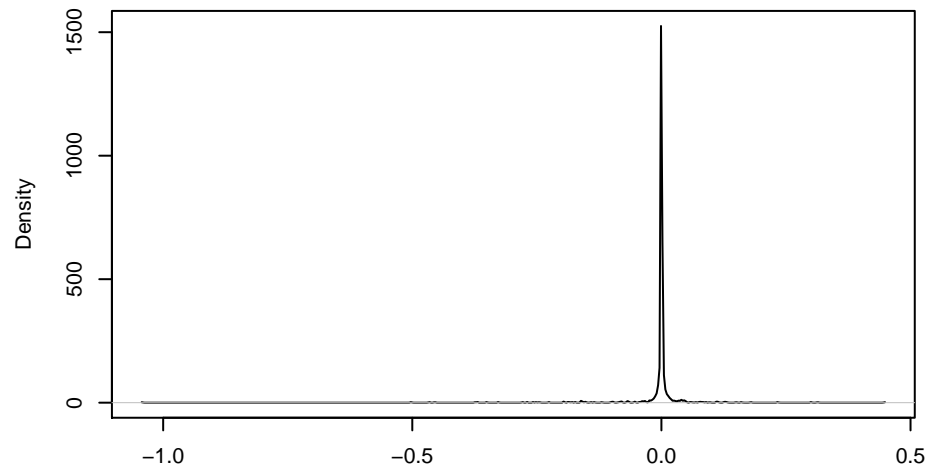
N = 1000 Bandwidth = 0.0009684

for SD= 0.2 overall fit, standartzed back to a SD=1



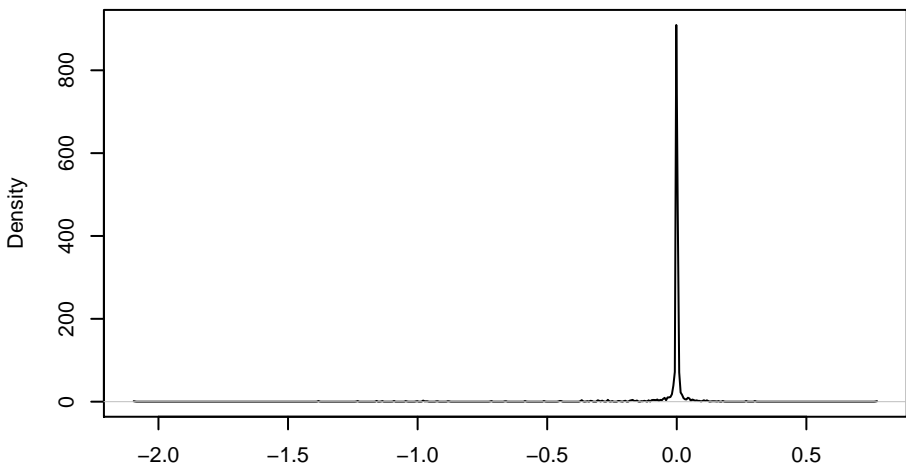
N = 1000 Bandwidth = 0.0001266

for SD= 0.1 overall fit, standartzed back to a SD=1



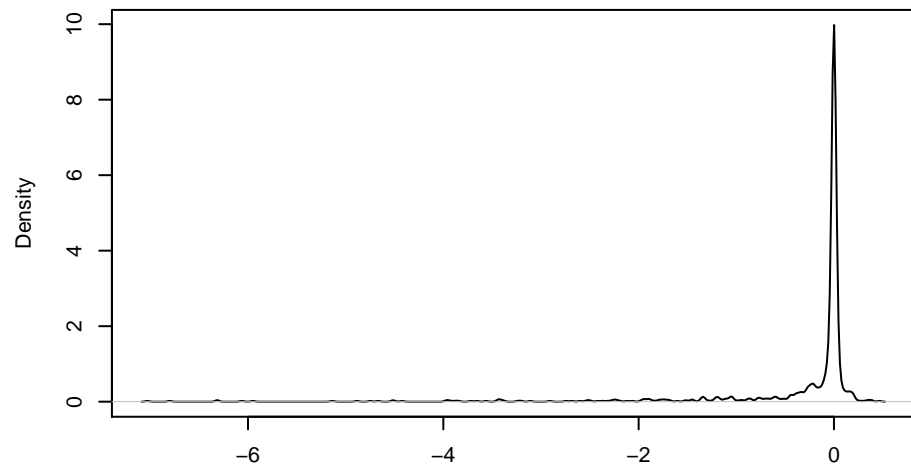
N = 1000 Bandwidth = 0.0001304

for SD= 0.05 overall fit, standartzed back to a SD=1



N = 1000 Bandwidth = 0.0002133

for SD= 0.01 overall fit, standartzed back to a SD=1



N = 1000 Bandwidth = 0.01909